

# Ceramic Thermostat CO/CS/CB

Ceramic Thermostat with snap-action disk: regulator, automatic controller, limiter



## Applications

The very compact ceramic-bodied thermostats are designed for current loads of up to 16A and have a wide range of applications. These thermostats can be used in regulator applications to maintain a constant temperature (normally closed or normally open); they can be used as thermal switches in monitoring applications (normally closed or normally open); or they can be used as limiters (normally closed) with mechanical resetting.

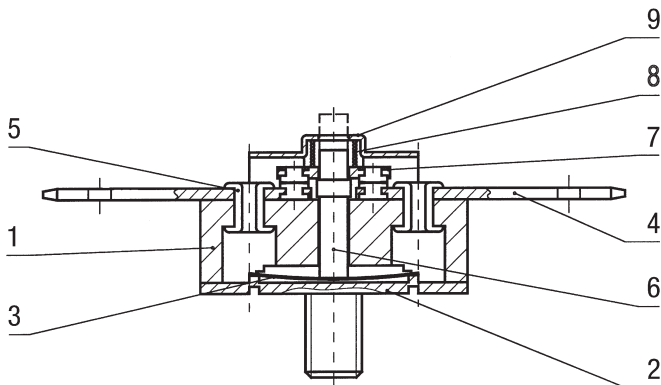
The thermostats are used everywhere where overheating protection is required in a minimum of space.

- domestic appliances
- heating appliances
- heat exchangers
- electrical equipment
- hotplates



## Mode of action

The thermostats respond to a fixed temperature that is determined by a snap-action bimetallic disk. The action of the bimetallic disk is mechanically transmitted to a bridge contact via a transfer pin, so that the electrical circuit is either open or closed, depending on the state of the bimetallic disk.



- 1 = Housing (Ceramic)
- 2 = Heat-conducting plate
- 3 = Bimetall element
- 4 = Connection terminals
- 5 = Rivet
- 6 = Switching pin
- 7 = Bridge Contact
- 8 = Spring
- 9 = Cover

## Technical specifications

Switching performance (CCA)	CS CO	{ 16 (2.5) A 250 V ac 1000 switches 16 (2.5) A 400 V ac 1000 switches 10 (1.5) A 250 V ac 30000 switches		
			CB	{ 16 (2.5) A 250 V ac 1000 switches 16 (2.5) A 400 V ac 1000 switches
Maximum speed of temperature change	20 °K/min			
Differential gap	30 ° - 60 °C (smaller values on request)			
Maximum switching temperature	350 °C			
Electr. insulation	> 2800 V			
Design	As per EN 60730 • micro-contact-breaker • type 1CL			
Contact material	Silver alloy			
Approval	VDE UL for 250 V			

It is the responsibility of the customer to verify the suitability for the intended use. We can provide no guarantees in this regard. However, we will be happy to advise you.



# KIENZLER AG

UNT. BAHNHOFSTR. 27  
CH-8340 HINWIL  
SWITZERLAND  
Tel. 0041 (0)44 937 10 30  
Fax 0041 (0)44 937 24 04

E-Mail: kienzlerinfo@kienzler.ch web: www.kienzler.ch

# Ceramic Thermostat CO/CS/CB

Ceramic Thermostat with snap-action disk: regulator, automatic controller, limiter

## Connection variants

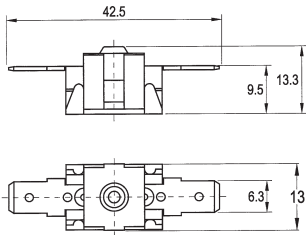


Fig. 1 Connectors  
6.3 x 0.8 horizontal

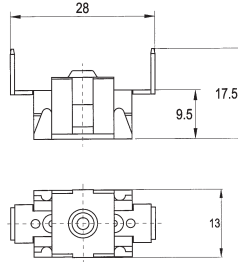


Fig. 2 Connectors  
6.3 x 0.8 vertically

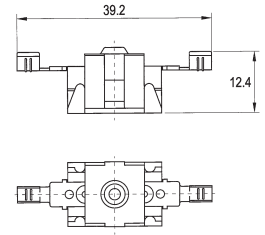


Fig. 3 Crimp Connectors

## Mounting variants

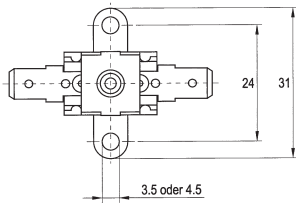


Fig. 4 Flange with  
fixing lugs both sides

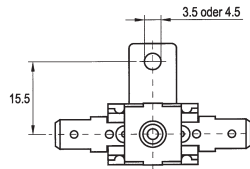


Fig. 5 Flange with  
fixing lugs one side

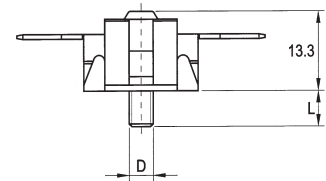
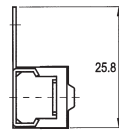


Fig. 6 Flange with  
threaded fixing stud

D	L
M4	6
M5	10

## Ordering Code

CO = Normally Closed, CS = Normally Open, CB = Limiter

CO: Contact opens on temperature rise  
CS: Contact closes on temperature rise  
CB: Contact opens on temperature rise,  
manual reset.

Fig. 1 Connectors  
Fig. 2 Connectors  
Fig. 3 Crimp Connectors

6.3 x 0.8 horizontal  
6.3 x 0.8 vertically

x x x ± x x

Fig. 4 with fixing lugs  
Fig. 4 with fixing lugs  
Fig. 5 with fixing lugs  
Fig. 5 with fixing lugs  
Fig. 6 with threaded fixing stud  
Fig. 7 with threaded fixing stud

both sides Ø3.5 mm  
both sides Ø4.5 mm  
one side Ø3.5 mm  
one side Ø4.5 mm  
M4 x 6 mm  
M5 x 6 mm

encapsulated bimetal — 0  
exposed bimetal — 1

Tolerance ± 5 °K	Tolerance ± 10 °K	Tolerance ± 20 °K
120°	120°	—
140°	140°	—
150°	150°	150°
—	180°	180°
—	200°	200°
—	220°	220°
—	250°	250°
—	—	280°
—	—	300°
—	—	320°
—	—	350°

\*) By ordering please specify the diameter

Ordering example: CO 111 250 ± 10 Ø3.5 = Normally closed, connectors 6.3 x 0.8 horizontal, double fixing lugs Ø3.5, exposed bimetal element, trigger temperature 250 °C ± 10 °K



# KIENZLER AG

UNT. BAHNHOFSTR. 27  
CH-8340 HINWIL  
SWITZERLAND  
Tel. 0041 (0)44 937 10 30  
Fax 0041 (0)44 937 24 04

E-Mail: kienzlerinfo@kienzler.ch web: www.kienzler.ch