

Temperature Control Circuit-Breaker KBF

Snap-action disc thermostat: Limiter with trip-release

Description

The extremely compact KBF thermostat with snap-action disc permits electrical loads of up to 16 A and is very versatile. Working as a trip-switch it is fitted with a mechanical reset. Resetting while overtemperature conditions prevail is inhibited by the trip-release mechanism thus providing double safety features.

The KBF can be installed in the most restricted spaces wherever protection against overheating is needed.

The KBF thermostats may be used in:

- cable reels
- heating appliances
- electrical appliances
- heat exchangers, etc.

Mode of function

The KBF thermostat (limiter with trip-switch) reacts to a set temperature which triggers the snap-action of a bimetallic disc. This spring movement of the bimetallic disc is mechanically transmitted by a transmission pin to a bridge-contact thus opening the circuit.

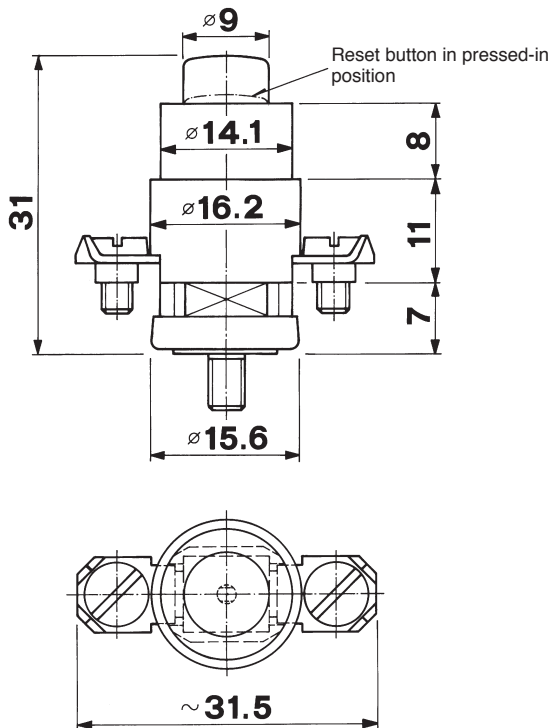
Resetting is achieved by manually depressing the reset button.



Approvals: VDE etc.

General dimensions:

For detailed dimensions & ordering key see reverse side



Technical specifications:

Switching performance (Test class 1):	16 (4) A 250V ac 2 000 cycles
Maximum speed of temperature change:	10 °K/min
Contact material:	Fine silver
Maximum temperature:	80 °C
Electrical strength:	> 3750 V~
Cut out:	Not affected by current



KIENZLER AG

UNT. BAHNHOFSTR. 27
CH-8340 HINWIL
SWITZERLAND
Tel. 0041 (0)44 937 10 30
Fax 0041 (0)44 937 24 04

E-Mail: kienzlerinfo@kienzler.ch web: www.kienzler.ch

Detailed dimensions

Reset button variants:

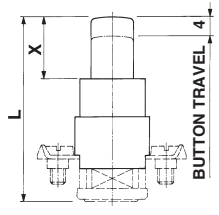


Fig. 1

Connection variants:

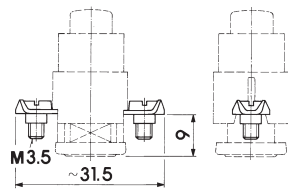


Fig. 2
Screw lugs downwards for conductors up to 2.5 mm²

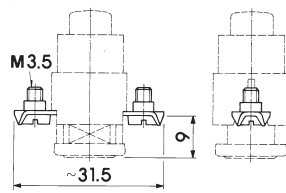


Fig. 3
Screw lugs upwards for conductors up to 1.5 mm²

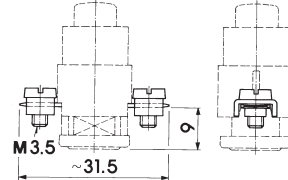


Fig. 4
Bowlings for conductors up to 2.5 mm²

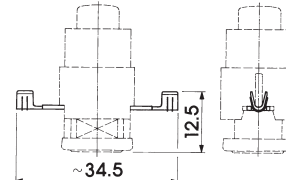


Fig. 5
Crimp lugs for conductors up to 1.5 mm²

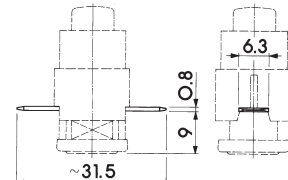


Fig. 6
Push-on tabs 6.3 mm, sideways

Mounting variants:

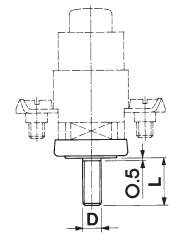


Fig. 7
Screw mounting

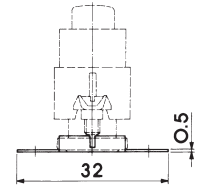
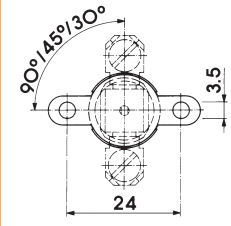


Fig. 8
Cover with locked flange



Ordering key:

Fig. 1 Short button L = 31 mm
 Fig. 1 Medium button L = 35 mm
 Fig. 1 Long button L = 39 mm

Fig. 2 Screw lugs downwards
 Fig. 3 Screw lugs upwards
 Fig. 4 Bowlings
 Fig. 5 Crimp lugs
 Fig. 6 Push-on tabs

Flat cover without flange
 Fig. 8 Cover with flange
 Fig. 8 Cover with flange
 Fig. 8 Cover with flange

Fig. 7 Screw mount.: Cover with threaded bolt
 Fig. 7 Screw mount.: Cover with threaded bolt
 Fig. 7 Screw mount.: Cover with threaded bolt
 Fig. 7 Screw mount.: Cover with threaded bolt

Encapsulated bimetallic disk _____ 0
 Uncovered bimetallic disk _____ 1

KBF X X X X
 X = 5 mm — 1
 X = 9 mm — 2
 X = 13 mm — 3

2.5 mm² — 1
 1.5 mm² — 2
 2.5 mm² — 3
 1.5 mm² — 4
 6.3 sideways — 5

_____ 0
 90° — 1
 45° — 2
 30° — 3

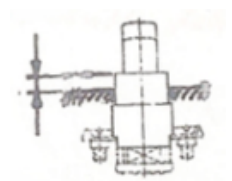
M4 x 6 mm — 4
 M5 x 6 mm — 5
 M4 x 10 mm — 6
 M4 x 15 mm — 7

X X X X X

045
 050
 056
 063
 071
 080

	Tolerance ± 10°K °C	Tolerance ± 5°K °C
045	45	45
050	50	50
056	—	56
063	63	63
071	—	71
080	80	80

Installation guideline
 excess length
 max. 4.8 mm



Ordering example: KBF 1140 056 ± 05 = Limiter with trip-release / short button / screw lugs downwards 2.5 mm² / cover with threaded bolt M4 x 6 mm / trigger temperature 56 °C ± 5 °K



KIENZLER AG

UNT. BAHNHOFSTR. 27
 CH-8340 HINWIL
 SWITZERLAND
 Tel. 0041 (0)44 937 10 30
 Fax 0041 (0)44 937 24 04

E-Mail: kienzlerinfo@kienzler.ch web: www.kienzler.ch